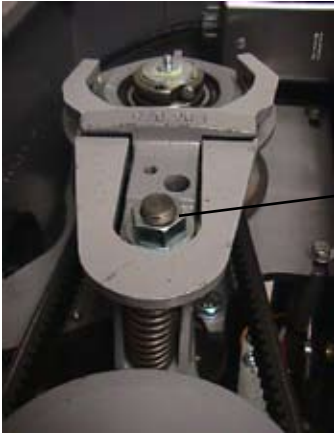




Motor Pulley Removal Instructions
Models W30-W100



Remove 24 MM nut



Insert screwdriver as shown, and pry up the spring fork assembly.



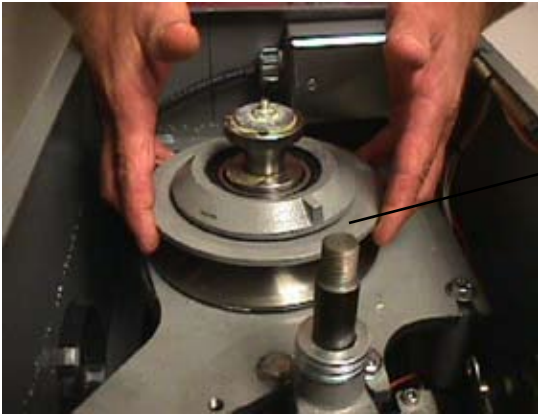
Remove the spring fork assembly.



Remove the vari drive belt.



Motor Pulley Removal Instructions
Models W30-W100



Using both hands, grasp the upper movable pulley...



and repeatably "slam" the pulley UP into the clamping ring.



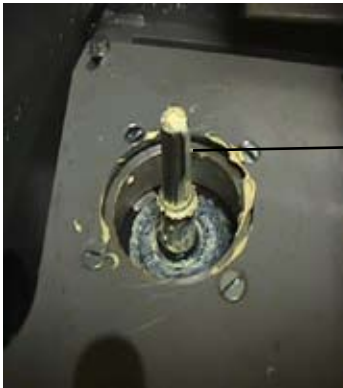
This action will eventually cause the motor pulley to come up and off the keyed motor shaft.



Remove motor pulley.



Motor Pulley Removal Instructions
Models W30-W100



The motor shaft and key.



With the new pulley in hand, align the motor key with the key slot in the motor pulley.



Motor pulley on shaft.



Now, using the upper movable pulley, repeatably "slam" down against the lower pulley. This action will "push" the pulley into place. Continue until the pulley bottoms out on the shoulder of the motor shaft.



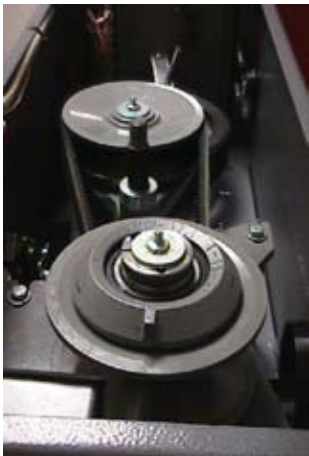
Motor Pulley Removal Instructions
Models W30-W100



The motor pulley installed.



Install the vari drive belt.



Remove the belt slack .



Motor Pulley Removal Instructions
Models W30-W100



Install the spring fork assembly. Insure the tab on the motor pulley is pointing toward the rear of the mixer.



Push fork down.....



only far enough to expose the threads on the shaft.



Install the washers and the 24 mm nut.
DO NOT TIGHTEN



Tighten the 24 MM nut WHILE THE MIXER IS RUNNING. Tighten until the nut bottoms out.
Adjust the low and high speed stops. Job is complete.